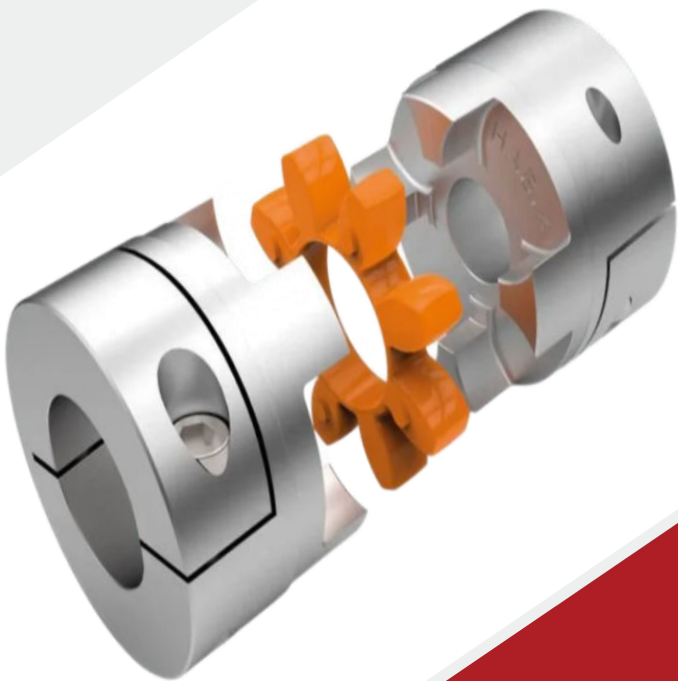


WWW.TECHYDRO.COM.CN

TECHYDRO

TECHYDRO



DRIVE COUPLING

ACCESSORIES

FOR ALL TECHNICAL SPECIFICATION OR DRAWINGS PLEASE
CONTACT OUR TEAM OR EMAIL US:
SALES@TECHYDRO.COM.CN

Ningbo Tech-Hydro Co. Ltd

Insert Specifications

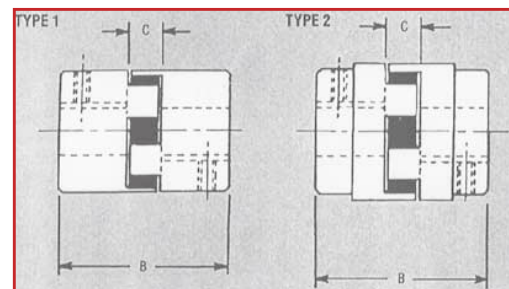
- Materials: Rubber (Buna-N), Hytrel, Urethane
- Max Misalignment: Angular: 1°
Parallel: 0.015"
- Temperature: Buna-N: -40° F to 212° F
Hytrel: -60° F to 250° F
Urethane: -30° F to 160° F

HUB Specifications

- Material: TH-L075 - L150: Sintered Iron (S.I.)
TH-L190 - L225: Iron (C.I.)

Coupling Dimensions & Specifications

Coupling Number	Type	Dimensions in.		Bore Weight lb	
		C	B	Min	Max
TH-L075	1	1/2	2-1/8	1.0	0.8
TH-L095	1	1/2	2-1/2	1.8	1.3
TH-L100	1	3/4	3-1/2	3.5	2.5
TH-L110	1	7/8	4-1/4	6.6	5.0
TH-L150	1	1	4-1/2	9.1	7.0
TH-L190	2	1	4-7/8	17.3	13.0
TH-L225	2	1	5-3/8	23.0	18.0



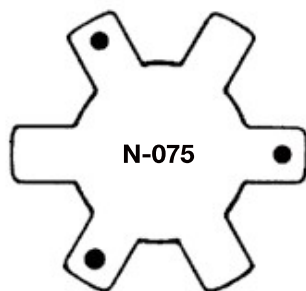
- Torque - Horsepower Ratings for Buna-N Insert:

Coupling Number	Max. Bore	Torque in Lbs	HP/100 RPM	HP/Speeds (RPM)			
				900	1200	1800	3600
TH-L075	7/8	88.0	0.140	1.26	1.68	2.51	5.03
TH-L095	1-1/8	189.0	0.300	2.70	3.60	5.40	10.80
TH-L100	1-3/8	416.0	0.660	5.94	7.92	11.88	23.76
TH-L110	1-5/8	788.0	1.250	11.25	15.00	22.51	45.01
TH-L150	1-7/8	1260.0	1.999	17.99	23.99	35.99	71.97
TH-L190	2-1/8	1700.0	2.697	24.28	32.37	48.55	97.10
TH-L225	2-3/8	2330.0	3.697	33.27	44.36	66.55	133.09

STOCK BORE SIZES

Bore	Key	L075	L095	L100	L110	L150	L190	L225
3/8	1/8" x 1/16"							
7/16	3/32" x 3/64"							
7/16	1/8" x 1/16"		9Q01200	9Q02200				
1/2	1/8" x 1/16"	9Q00500	9Q01300	9Q02300				
9/16	1/8" x 1/16"	9Q00550	9Q01350	9Q02350				
5/8	5/32" x 5/64"	9Q00900	9Q01900	9Q03100	9Q04300	9Q04590		
5/8	3/16" x 3/32"	9Q00600	9Q01400	9Q02400	9Q03400	9Q04600		
3/4	3/16" x 3/32"	9Q00700	9Q01500	9Q02500	9Q03500	9Q04700	9Q05761	
7/8	3/16" x 3/32"	9Q00800	9Q01600	9Q02600	9Q03600	9Q04800	9Q05765	9Q06000
7/8	1/4" x 1/8"		9Q02000	9Q03200	9Q04400	9Q05700	9Q05763	9Q06050
1	1/4" x 1/8"		9Q01700	9Q02700	9Q03700	9Q04900	9Q05764	9Q06100
1-1/8	1/4" x 1/8"		9Q01800	9Q02800	9Q03800	9Q05000	9Q05772	9Q06200
1-1/4	1/4" x 1/8"			9Q02900	9Q03900	9Q05100	9Q05766	9Q06300
1-1/4	5/16" x 5/32"			9Q03250	9Q04450	9Q05750	9Q05767	9Q07400
1-3/8	5/16" x 5/32"			9Q03000	9Q04000	9Q05200	9Q05769	9Q07450
1-1/2	3/8" x 3/16"				9Q04100	9Q05300	9Q05768	9Q06500
1-5/8	3/8" x 3/16"				9Q04200	9Q05400	9Q05770	9Q06600
1-3/4	3/8" x 3/16"					9Q05500	9Q05780	9Q06650
1-7/8	1/2" x 1/4"					9Q05600	9Q05785	9Q06800
2	1/2" x 1/4"						9Q05790	9Q06900
2-1/8	1/2" x 1/4"						9Q05795	9Q07000
2-1/4	1/2" x 1/4"							9Q07100
2-3/8	5/8" x 5/16"							9Q07200

REPLACEMENT INSERTS



- Raised dots on each side of the cushion insert provide the correct pre-measured gap between the jaw and spider.

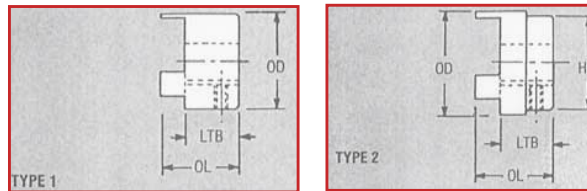
Series	Nitrite Inserts	Hytrel Inserts	Urethane Inserts
TH-L075	N-075	H-075	U-075
TH-L095	N-095	H-095	U-095
TH-L100	N-100	H-100	U-100
TH-L110	N-110	H-110	U-110
TH-L150	N-150	H-150	U-150
TH-L190	N-190	H-190	U-190
TH-L225	N-225	H-225	U-225

BORE TOLERANCE

Bore Tolerances

Up to 1-7/16	+0.0015/-0.000
Over 1-1/2	+0.002/-0.000

HUB DIMENSIONS AND SPECIFICATIONS



HUB Number	Hub		Dimensions				Bore Range		Hub Weight	
	Mat'l	Type	OD	HD	LT B	OL	Min	Max	Bores	
TH-L075	S.I.	1	1-3/4	-	13/16	1-9/32	1/4	7/8	0.50	0.40
TH-L095	S.I.	1	2-7/64	-	1	1-29/64	7/16	1-1/8	0.90	0.65
TH-L100	S.I.	1	2-17/32	-	1-3/8	2-3/64	7/16	1-3/8	1.75	1.25
TH-L110	S.I.	1	3-5/16	-	1-11/16	2-31/64	5/8	1-5/8	3.20	2.40
TH-L150	S.I.	1	3-3/4	-	1-3/4	2-11/16	5/8	1-7/8	4.50	3.40
TH-L190	C.I.	2	4-1/2	4	1-15/16	2-57/64	3/4	2-1/8	8.20	6.20
TH-L225	C.I.	2	5	4-1/4	2-3/16	3-7/64	3/4	2-3/8	11.10	8.60

ORDERING INFORMATION

■ Order by code from chart below or by Tech-Hydro part number from chart

TH-L100

Series

TH-L075
TH-L095
TH-L100
TH-L110
TH-L150
TH-L190
TH-L225

1-1/8" x 1/4"

Electric Motor Half

Prime Mover,
Shaft Bore/Key

5/8 x 5/32

Pump Half

Pump Shaft,
Bore/Key

FOR MORE INFORMATION PLEASE CONTACT US

SALES@TECHYDRO.COM.CN



TECHYDRO

📞 +86-15869517019

✉️ SALES@techydro.com.cn

🌐 WWW.TECHYDRO.COM.CN

📞 whatsapp/Wechat: +86-15869517019

TEL: +86(0574) -87021030