

SEALS, PLUGS, PLATES
Pump, Motors, Gear Boxes

rexroth

SAUER DANFOSS
What really matters is inside

CATERPILLAR

KOMATSU

EATON

Kawasaki

Parker



● 油封目录 Oil seal catalogue

Hydraulic Pump Oil Seal				
No.	Size	Pump Model	Style	Material
1	8*16*9		VC	VITON
2	10*25.4*6		CRWAS	VITON
3	10*27*8.5		HLPS	VITON
4	11.11*25.4*9.52		TBV	VITON
5	17*30*6	MA16	BAFSL1SF	VITON
6	17.145*34.925*7.62		TCV	VITON
7	17.46*28.58*5.7/6.3		BAB1SL	VITON
8	18*30*6		BAFSL1SF	VITON
9	19*30*6		BAFSL1SE	VITON
10	19*35*6		BAFSL1SF	VITON
11	19.5*30*7			VITON
12	19*40*7			VITON
13	20*26*5		SVY	VITON
14	20*47*6		BAFSL1SF	VITON
15	20*30*7			VITON
16	20*35*6			VITON
17	22*35*6	A10V18	BAFSL1F	VITON
18	22*40*6			VITON
19	24.5*38*7			VITON
20	25*35*6	A10V028, A10VG28	BAFSLSF	VITON
21	25*37*7			VITON
22	25*40*6			VITON

No.	Size	Pump Model	Style	Material
23	25*45*9		TCZ	VITON
24	25.38*44.42*7.16	VICKERS PVQ40	HMSA110	VITON
25	25*46*9.5		TCZ	VITON
26	26*42*7			VITON
27	27*35*7			VITON
28	27.8*41.3*6.8			VITON
29	27.8*50.8*7			VITON
30	28*40*6	A2FO10,A2FO12,A2FO16,A2FE10,A2FE12,A2FE16,A2FM10,A2FM12,A2FM16, A10V45,42L28	BAB2 SL05	VITON
31	28.56*42*5.5	42L41(SAUER DANFOSS)	BAKHDSN	VITON
32	28.575*50.8*6.35	Eaton 78462	TCV	VITON
33	30*42*6		BABSL10FX2	VITON
34	30*48*7			VITON
35	30*50*7			VITON
36	30*52*7			VITON
37	30*52*10			VITON
38	30*62*10			VITON
39	31*50.8*7.95			VITON
40	31.75*44.3*6.4/6.6			VITON
41	32*47*7			VITON
42	32*52*7			VITON
43	33.34*72.39*9.50	MF035, MPV046	UP0450E	VITON
44	34*62*7			VITON
45	34.925*57.15*8.85			VITON

No.	Size	Pump Model	Style	Material
46	34.92*52*6		BAFSL1SF	VITON
47	34.93*50.8*7.95	PVH57	TCV	VITON
48	35*47*6		BAFSL1SF	VITON
49	35*50*6	AG2055A	VC	VITON
50	35*52*5	Danfoss MOS160	BAKHDSN	VITON
51	35*52*6/5.5	A6VM28,A2FO23/28/32/45, A2FE23/28/32/45,A2FM23/28/32/45,A10V63/71,ATVO28	BAFSL1SF	VITON
52	35*54*6/5.5	A4VG28	BAESL1SF	VITON
53	35*55*7		BAESL1SF	VITON
54	35*55*11	Kawasaki K3V063(AP2085G)	TCN	VITON
55	35*55*12	AP2086F	TCN	VITON
56	35*60*15	BP4561E	TCN	VITON
57	35*57*7			VITON
58	36.5*50.8*8			VITON
59	37*62*6			VITON
60	38*50*7			VITON
61	38*58*11	AP2240G	TCN	VITON
62	38.15*57.15*9.5	90R075	UP0234E	VITON
63	38.1*57.15*7.95	PVH74/98	TCV	VITON
64	38.1*50.8*8			VITON
65	40*52*6			VITON
66	40*55*6/5.5	A2F056/63,A2FE56/63,A2FM56/63, A4VG40,A11V40,HMF50,HPV55(Linde)	BAFSL1SF	VITON
67	40*60*12	AP2379	TCN	VITON
68	40*62*6	A8V55,A2F55, A10VG40/45,A11VG50 V30D95,KVB87	BABSL10FX2	VITON

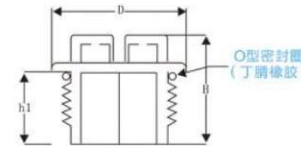
No.	Size	Pump Model	Style	Material
69	40*62*11	KawasakiK3V112,12T, NV80(AP2388E)	TCN	VITON
70	40*67*7	A4VG56	BABSL10FX2	VITON
71	40*80*7.5	PV089	BAFSL1SF	VITON
72	42*62*7	V30D250	BABSL10X2	VITON
73	41.28*60.32*9.5	Eaton 45V60A1B22L	TCV	VITON
74	42*57*7			VITON
75	42*65*7			VITON
76	42*72*6.5			VITON
77	43.2*58*6			VITON
78	44.45*57.15*7.9		TCV	VITON
79	44.35*68.8*9			VITON
80	44.45*64.5*6			VITON
81	44.45*60*7	51C80, 90R100/130/180/250	BAFSL1SF	VITON
82	44.45*63.5*8.89	Eaton 33,46,6423	"TCM108395-001"	VITON
83	44.45*63.5*9.5	90R100/130/180/250	UP0445E	VITON
84	45*62*7	A6VM55,A7V055, A2FO80/90,A2FE80/90,A2FM80/90, A4V71,A10V100,A11V60/75,BPV50/70(Linde),(SAM)HCV70	BABSL10FX2	VITON
85	45*65*6		BAFSL1SF	VITON
86	45*65*7/6		BAKHDSN	VITON
87	45*68*12	AW2668E	DC	VITON
88	45*68*12	"Kawasaki K3V112,14T, SPK10/10(AP2668G)"	TCN	VITON
89	45*80*7/5	A4V(T)G7	BABSL10FX2	VITON
90	45*58*7			VITON
91	45*63*7			VITON
92	45*68*7			VITON
93	45*68*9			VITON
94	45*70*7			VITON
95	46*68*7			VITON

No.	Size	Pump Model	Style	Material
96	47*62*7	A8VO107	BABSL10FX2	VITON
97	47.6*76.2*7			VITON
98	48*62*7			VITON
99	48*70*12	AP2791G	TCN	VITON
100	49.23*63.55*7.95	PVH131	TCV	VITON
101	49*68*7			VITON
102	50*68*7			VITON
103	50*65*7		BAFSL1SF	VITON
104	50*68*8/8.5	A4VSO71	BAB3S1	VITON
105	50*70*7		BABSL10FX2	VITON
106	50*72*7/5	A6V80,A8V80,A6VE80 A6VM80,A7VO80,A2FO107/125, A2FE107/125,A2FM107/125 A10V140,A11V95,BPV100(Linde) A10VSO140,HPR125-020V001	BAFSL1SF	VITON
107	50*72*12	AP2864I	TCN	VITON
108	50*80*7/5	A4V(T)G90	BABSL10FX2	VITON
109	50*90*7			VITON
110	52*68*10			VITON
111	55*68*7			VITON
112	55*75*7			VITON
113	52*72*7/8		BAFSL1SF	VITON
114	55*70*7	A2F107, A11V130	BAB3SLO	VITON
115	55*72*7	HPR160	BABSL10FX2	VITON
116	55*78*8	K5V140	BAFSL1SF	VITON
117	55*78*12	Kawasaki K3V140, K3V180, NV111 HPV091,HPV102,HPV116,K5V200(AP3055F)	TCN	VITON

No.	Size	Pump Model	Style	Material
118	55*78*12	AW3055H	DC	VITON
119	55*90*7	A4VG145	BABSL10FX2	VITON
120	55*75*12			VITON
121	55*80*7			VITON
122	55*100*7			VITON
123	57.15*76.3*9.53			VITON
124	58*80*8		BABSL	VITON
125	65*88*7		BAFSL1SF	VITON
126	60*80*7/5.5	A6VM107,A6VM140, A7VO107,A8V107, A2F250,A2FO160/180,A2FE160/180, A2FM160/180A4VSO125,A4VSO180, A11V160,A11V190,A10V190	BAFSL1SF	VITON
127	60*82*12	AW3222E	DC	VITON
128	60*82*12	AP3222B	TCN	VITON
129	60*82*7			VITON
130	60*85*7			VITON
131	60*90*7		DC	VITON
132	60*110*7		TCN	VITON
133	60*106*7	A4VG180		VITON
134	61*87*6			VITON
135	62*85*8			VITON
136	62*85*7	A8V172, A8V200, A2F160,		VITON
137	63.9*89*11		BABSL10FX2	VITON
138	65*97*7.5	PV23		VITON
139	65*88*7			VITON
140	65*100*7		BABSL10FX2	VITON
141	65*90*7		TCM	VITON

密封堵头
 SEALING PLUGS

 保护和密封各类螺纹产品
 内十字外六边设计方便手
 动或电动装配

 材料: LDPE/PP
 MATERIAL: LDPE/PP
 颜色: 红色/黄色
 COLOR: RED/YELLOW

 O型密封圈
 (丁腈橡胶)

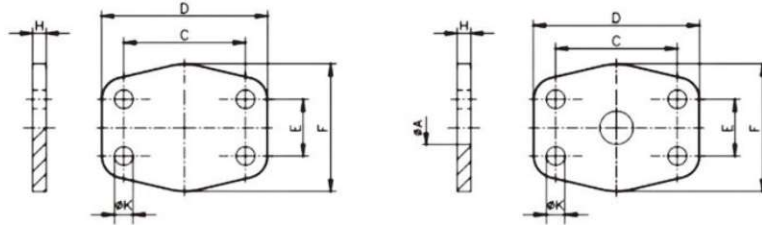
No.	Size	Pump Model	Style	Material
142	70*90*7/5.5		BAFSL1SF	VITON
143	70*90*7/5.5	A6VM160/200, A7V0160 A8V355, A2F355, A2F0200, A2FE200 A2FM200, A4VS0250, A11V250 A11V260, A10V260	BAFSLIS F	VITON
144	70*95*7		BABSL10FX2	VITON
145	73*90*7/8	SAI	BAFSL1SF	VITON
146	70*85*8			VITON
147	75*90*7			VITON
148	75*120*7	A4VG250	BABSL10FX2	VITON
149	80*100*7	A4VS0355, A6VM500HH1T	BAFSL1SFBAFSLISF	VITON
150	85*110*8	SALMM750 Motor	BAFSLISF	VITON
151	85*105*7			VITON
152	95*120*8			VITON
153	90*110*7.5/8.5		PPS	VITON
154	95*140*8		BABSL10FX2	VITON
155	100*120*8	A2F500	TCV	VITON
156	100*120*12		TCV	VITON
157	110*130*12			VITON
158	110*130*7			VITON
159	110*130*7			VITON
160	150*164*5		TCV	VITON
161	185*205*7			VITON
162	185*205*10			VITON
163	240*270*8.5		BABSL1	VITON
164	300*340*10	CB400-320SA0N00 Motor	A0FS	VITON
165	300*340*15	CB400-321SA0N00 Motor	AD	VITON

Precision	螺纹尺寸 Thread size	尺寸(mm) size		
0161	公制 Public system	D	H	h1
0162	M10X1	15.8	15.6	9.2
0163	M12X1.5	16.7	17.1	10.2
0164	M14X1.5	18.5	18.4	10.9
0165	M16X1.5	21.6	19.1	10.8
0166	M18X1.5	23.7	18.6	10.8
0167	M20X1.5	25.9	22.8	12.9
0168	M22X1.5	27.1	20.7	10.8
0169	M24X1.5	29.9	22.4	12.3
0170	M26X1.5	31.9	23.2	12.8
0171	M27X1.5	31.9	23.5	13
0172	M27X2	31.9	24	13.8
0173	M30X1.5	38	26.4	14.2
0174	M30X2	38	26.5	14.2
0175	M33X2	38	27.1	14.2
0176	M36X2	44.8	26.5	14.3
0177	M42X2	49.6	28.9	14
0178	M48X2	55.7	28.5	14

Precision	螺纹尺寸 Thread size	尺寸(mm) size		
0179	BSP/Gas	D	H	h1
0180	1/8"	1	15.6	9.2
0181	1/4"	15.6	18.5	11
0182	3/8"	21.5	19	11.1
0183	1/2"	27	22.6	13
0184	3/4"	32	23	12.8
0185	1"	38.9	20.9	14
0186	1 1/4"	49.7	28.9	14.1
0187	1 1/2"	55.8	28.5	13.8

Precision	螺纹尺寸 Thread size	尺寸(mm)		
0188	UNF	D	H	h1
0189	9/16" X18	18.7	18.4	10.8
0190	3/4" X16	25.6	22.6	13
0191	7/8" X14	20.8	22.8	12.9
0192	1" X14	30.0	22.2	12.2
0193	1 1/16" X12	32.1	24.4	14
0194	15/16" X12	38.9	27	14
0195	15/8" X12	49.6	28.9	14
0196	17/8" X12	55.7	28.5	13.9

法兰盲板 Flange blind plate

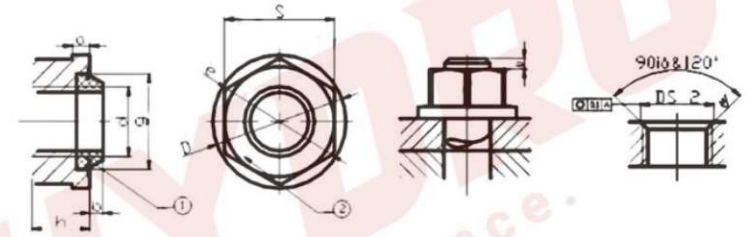


材料 (Material)

- 碳钢 carbon steel
- 表面涂防锈油Blank oiled
- 表面Cr+3白锌Cr+3 white zinked
- 表面锌镁合金 Ni-Zn zinked

规格 Size (inch)	型号 Type	尺寸参数 Dimension							单重 Wt (kg)
		A	C	D	E	F	H	K	
		轻系列 3000psi							
1/2 "	AP301/ZP301	13	38.10	54	17.48	46	3	9	0.04
3/4 "	AP302/ZP302	19	47.63	65	22.23	52	3	11	0.06
1 "	AP303/ZP303	25	52.37	70	26.19	58	3	11	0.07
1 1/4 "	AP304/ZP304	32	58.72	79	30.18	72	3	11	0.10
1 1/2 "	AP305/ZP305	38	69.85	94	35.71	82	3	13	0.14
2 "	AP306/ZP306	51	77.77	102	42.88	90	3	13	0.17
2 1/2 "	AP307/ZP307	63	88.90	114	50.80	108	3	13	0.23
3 "	AP308/ZP308	73	106.38	135	61.93	130	4	17	0.43
3 1/2 "	AP309/ZP309	89	120.65	152	69.85	139	4	17	0.53
4 "	AP310/ZP310	99	130.18	162	77.77	152	4	17	0.63
5 "	AP311/ZP311	120	152.40	184	92.08	180	4	17	0.86
		重系列 6000psi							
1/2 "	AP601/ZP601	13	40.49	56	18.24	47	4	9	0.06
3/4 "	AP602/ZP602	17	50.80	71	23.80	60	4	11	0.10
1 "	AP603/ZP603	24	57.15	81	27.76	69	4	13	0.13
1 1/4 "	AP604/ZP604	31	66.68	95	31.75	77	4	15	0.17
1 1/2 "	AP605/ZP605	38	79.38	113	36.50	95	4	17	0.23
2 "	AP606/ZP606	51	96.82	133	44.45	114	4	21	0.35

密封螺母 Sealing nut



PRODUCT SPECIFICATIONS

物料号	规格型号	D	S	H	推荐锁紧扭力Nm
01310.060.001	M6x 1	12	10	7	9.0-10.1
01310.080.001	M8x1.25	17	13	8.5	21.6-24.6
01310.080.100	M8x1	17	13	8.5	22.8-26.5
01310.100.001	M10x1.5	21	17	9	46-48
01310.100.100	M10x1	21	17	9	46-53
01310.120.001	M12x1.75	23	19	10	73-84
01310.120.150	M12x1.5	23	19	10	78-90
01310.120.125	M12x1.25	23	19	10	78-9
01310.120.100	M12x1	23	19	10	82-94